

# Hardirock®

# SOFFIT BOARD



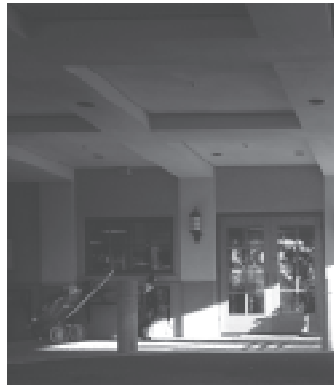
Hardirock Exterior Gypsum Soffit Board is available as 1/2" Regular or 5/8" Fire X, tapered edge gypsum board designed especially for exterior overhead area applications.

The specially formulated fire-resistive core of the 5/8" exterior soffit board is protected on both sides with water-repellent paper. It is designed to provide extra resistance to moisture and sagging in exterior applications with indirect weather exposure and standard insulation loads. The lighter 1/2" exterior soffit board also resists sagging, supports standard insulation loads, provides an equally good paintable surface, and is easier to install.

In commercial construction Hardirock Exterior Gypsum Soffit Board is suited for overhead use in covered walkways, malls, large canopies and parking areas. It is also suitable for residential overhead applications such as open porches, breezeways, carports and exterior soffits.

Hardirock Exterior Gypsum Soffit Board is manufactured with the long edges tapered to facilitate the application of joint compound. High quality face paper provides a smooth surface that can be decorated with exterior grade paint and texture.

For Additional Product Information  
 Contact James Hardie Gypsum  
 Technical Services Department  
 Phone: 1-800-346-3537  
 Web Site: [www.hardirock.com](http://www.hardirock.com)



**Hardirock®  
 Exterior Gypsum  
 Soffit Board**

### PHYSICAL PROPERTIES

Hardirock® Exterior Gypsum Soffit Board meets or exceeds the physical property requirements specified in American Society for Testing and Materials (ASTM) C 931.

	Regular	Fire X
Thickness	1/2" (12.7 mm)	5/8" (15.9 mm)
Width	4' (1219 mm)	4' (1219 mm)
Standard Lengths	12' (3658 mm)	12' (3658 mm)
Edges	Tapered	Tapered
Approx. Weight	1.8 psf (8.3 kg/m <sup>2</sup> )	2.2 psf (10.8 kg/m <sup>2</sup> )

For further information consult a James Hardie Gypsum sales representative. All products are not available in all geographic areas. Consult local building codes for regulations in your area.

### SURFACE BURNING CHARACTERISTICS

When tested in accordance with ASTM E 84:  
 Flame Spread (Class I, Class A) 0 - 25  
 Smoke Developed 0

### HANDLING AND STORAGE

Hardirock gypsum boards should be stacked flat on a smooth, level surface, but not stored directly on concrete floors. When spacers are used, position them closely enough together to minimize warpage. Care should be taken to prevent damage to edges and corners. Always keep Hardirock gypsum board dry prior to installation.

### TECHNICAL REFERENCES

For additional information on application and finishing consult:

- BOCA® National Building Code
- Standard Building Code
- Uniform Building Code
- CABO One- and Two-Family Dwelling Code
- Gypsum Association Brochures GA-216 and GA-600
- ASTM C 754 and C 840
- As a member of the Gypsum Association, James Hardie's Exterior Gypsum Soffit Board is recognized for use in ICBO Evaluation Service Report #1874



**James Hardie  
 Gypsum**

## CUTTING

The score and snap method is a fast and efficient way to cut Hardirock gypsum boards.

Steps:

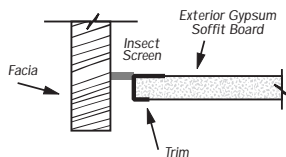
1. On the face side, position a straight edge along the line of cut.
2. Score with a knife or other suitable tool.
3. With a quick, firm motion, snap back away from the face.
4. The back paper can either be cut with a knife or separated by snapping the piece in the opposite direction.
5. Smooth all cut ends and edges to ensure tight joints.

Hardirock gypsum boards can also be cut with a saw. For information on avoiding dust inhalation, refer to the Material Safety Data Sheet available wherever James Hardie Gypsum products are sold. Safety glasses should always be worn when using power tools.

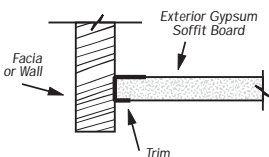
To make cut outs, score around the perimeter on the face and back and tap out the waste piece from the face side. For rectangular openings, it may be helpful to score diagonally from corner to corner. Cut outs can also be made with a drywall saw.

## INSTALLATION

Follow the instructions below when installing Hardirock Exterior Soffit Board. For additional information consult ASTM C 840 and Gypsum Association Brochure GA-216. Where fire resistance and sound control are required, specific construction details should be obtained from the Gypsum Association Fire Resistance Design Manual, the Uniform Building Code and ICBO Report #1874.



FACIA DETAIL DIAGRAM A



FACIA DETAIL DIAGRAM B

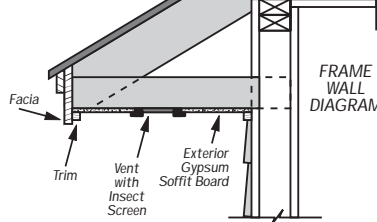
### Framing

Hardirock Exterior Soffit Board shall be installed perpendicular to wood or steel joists and trusses spaced at 24" o.c. maximum. End joints must fall over framing members and have a maximum space of 1/16" to 1/8" between ends.

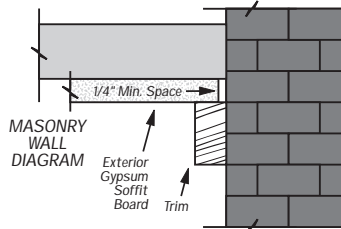
### WARRANTY

Hardie expressly warrants title and that the products sold by it hereunder are free from defects in materials at the time of shipment. THIS WARRANTY IS LIMITED TO THE ORIGINAL OWNER, and may not be enlarged by any sales representative, written sales information or drawings. EXCEPT FOR SUCH EXPRESS WARRANTIES, HARDIE MAKES NO WARRANTY OF ANY KIND WHATSOEVER, EXPRESS OR IMPLIED AND ALL WARRANTIES OF MERCHANTABILITY, FITNESS FOR A PARTICULAR PURPOSE, AND OTHER WARRANTIES OF ANY KIND ARE HEREBY DISCLAIMED BY HARDIE AND EXCLUDED. PURCHASER AGREES THIS HAS BEEN NEGOTIATED AND CONSENTS HERETO. Hardie shall have the right, at its sole option, to replace or repair any defective products, to refund the purchase price, or grant a reasonable allowance on account of such defects. Any claims or exceptions by Purchaser for defective products must be made in writing within 30 days after Purchaser's receipt of shipment and in all events before installation is commenced, and Purchaser shall give Hardie an opportunity to investigate. HARDIE IS FURNISHING BASIC PRODUCTS AT STANDARD PRICES AND IS NOT INSURING PURCHASER AGAINST POSSIBLE CONSEQUENCES OF ERROR, OMISSION OR NEGLIGENCE IN PRODUCTION OR DELIVERY, EXCEPT FOR BREACH OF THE EXPRESS WARRANTIES SPECIFIED IN THIS SECTION. HARDIE SHALL NOT, UNDER ANY CIRCUMSTANCES, BE LIABLE ON ACCOUNT OF ANY IMPERFECTION, DEVIATION FROM SPECIFICATIONS OR OTHER DEFECT IMPAIRING THE QUALITY, VALUE OR SUITABILITY FOR ANY PURPOSE OF ANY PRODUCT SOLD HEREUNDER, WHETHER CAUSED BY HARDIE'S NEGLIGENCE OR OTHERWISE, IN NO EVENT SHALL HARDIE BE LIABLE FOR CONSEQUENTIAL, SPECIAL OR CONTINGENT DAMAGES, OR ANY OTHER CLAIM OR DEMAND WHATSOEVER, EXCEPT TO THE EXTENT OF THE PURCHASE PRICE OF THE PRODUCT, THE REFUND OF WHICH SHALL BE PURCHASER'S SOLE AND EXCLUSIVE REMEDY HEREUNDER. PURCHASER ASSUMES ALL RISK OF LOSS, DAMAGE OR DELAY INCIDENT TO THE FURNISHING OF ANY PRODUCT BY HARDIE HEREUNDER, OR THE UTILIZATION THEREOF, EXCEPT TO THE EXTENT EXPRESSLY ABOVE PROVIDED. PURCHASER AGREES THIS HAS BEEN NEGOTIATED AND CONSENTS HERETO. 9/99

All construction shall comply with local building codes including the use of vapor barriers where required. Unheated spaces above ceilings should be properly ventilated. Attics or similar unheated spaces above gypsum soffit board should always be adequately cross ventilated. This can be accomplished by either screened louvers or other approved means.



Soffits must decline away from the structure and have suitable fascia installed around the perimeter to protect the board from direct exposure to water. The fascia must provide a minimum of 1/4" drip below the ceiling boards. Panel edges should be placed not less than 1/4" away from abutting vertical surfaces unless protected by water stops.



### Fastener Types and Sizes

Soffit board can be attached with either:

- nails (meeting ASTM C 514) or
- screws (meeting ASTM C 1002).

### Attachment

1. Hardirock Exterior Gypsum Soffit Board should be installed on the ceilings first. Apply at right angles to framing.
2. Ends and edges of sheets shall be in moderate contact.
3. Holding Hardirock soffit board firmly against the framing, begin fastening in the center of the sheet and move outward toward ends and edges. Nails or screws must not be less than 3/8" or further than 1/2" from ends and edges (except where floating angles are used).

Unless otherwise specified in fire rated assemblies, soffit board can be attached with nails placed 7" o.c. or screws 12" o.c. Consideration should be given to possible wind uplift in exterior locations.

### Control Joints

Control joints, as specified and detailed by the architect, should be installed as follows:

- In ceilings exceeding 900 sq. ft. in area. Linear dimensions between control joints should not be greater than 30' in either direction and should always be installed where framing or furring changes direction.
- To coincide with the construction joints of the building.

### Joint, Corner & Surface Preparation

These areas should be finished in accordance with ASTM C 840, the Gypsum Association Brochure GA-216 and the joint compound manufacturer's instructions. Materials shall comply with ASTM C 475.

1. Fill and level joints with joint compound. Quick setting compound may be substituted for embedding compound to speed drying time under wet job conditions. Batten strips and H dividers can also be used for joint finishing.
2. Embed tape into the wet compound and allow to dry.
3. Apply a second coat of compound across the joint and feather to approximately 4" on each side.
4. Apply a third coat and feather to 6" on each side.
5. Allow each coat to dry before proceeding.
6. Spot cover all fastener heads with three coats of joint compound applied in different directions.
7. Lightly sand the last coat of all treated areas, taking care not to rough the surrounding gypsum board paper. Smoothing can also be accomplished with a damp sponge.

### Finishing

Hardirock Exterior Gypsum Soffit Board should be primed and then painted according to paint manufacturers recommendations.

### LIMITATIONS

- Gypsum soffit board shall not be used in areas continuously or repeatedly exposed to excessive moisture, steam, or sustained temperatures exceeding 125° F.
- Water resistant gypsum board shall not be used in overhead applications in lieu of gypsum soffit board.

**Consider local climatic conditions and consult local building codes.**